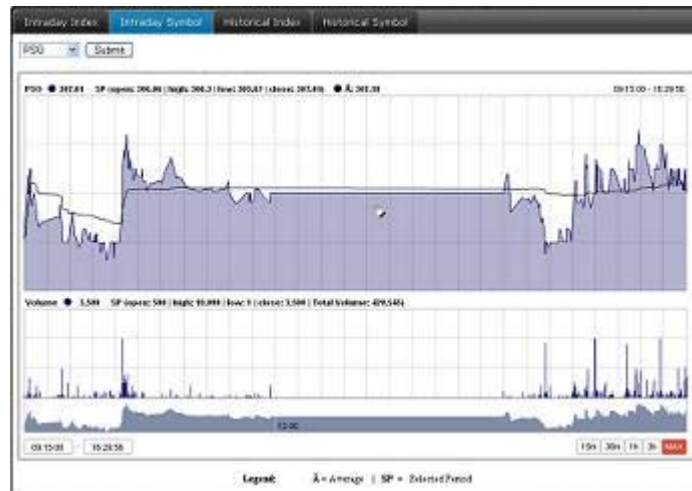




Graphical Representation of the Pakistani Stock Market

Understanding the Symbol Graphs An Overview



Part of our online Education series; WEducate,
<http://www.weonline.biz>

Table of Contents:

Types of Symbol Graphs

Intraday graphs

The Graphs Layout

 The Different Symbols for the Karachi Stock Exchange

Interactivity

 Illustration 1: Where the mouse is not pointing at the graph

 Illustration 2: Where the mouse is pointing at the graph

 Illustration 3: Pre-defined Time Lines

 Illustration 4: Slide Show cum video

 Illustration 5: Information

Historical Graphs

Introduction:

“A picture tells a thousand words”. Our Interactive Graphs have proved this phrase by providing the user a unique and over-whelming experience.

Ever wondered, how the market trailed since the opening bells as a regular market screen provides the market information at that point in time with some sense of what has happened from the beginning till that time. A Graph on the other hand paints a much broader picture.

But it does not end here as there are various types of graphs with varying capabilities. A better understanding can only be achieved if the graph can paint the picture the way you want to see it, so you don't miss out on the finer points.

Our highly Interactive Graphs provides you with just that as they not only plot the Index(es) but also empower the user by offering un-matched tools. From pre-defined time frames to simply watching the graph play as a movie, our Interactive graphs will truly provide an enlightened experience.

Types of Symbol Graphs

WE offer three different types of Symbol Graphs which are highly interactive, namely;

- Intraday Graphs
- Historical Graphs and
- Technical Analysis (Both Historical as well as Intraday)

WE will be covering the Intraday and Historical Symbol Graphs in this article, whereas for Technical Analysis, please see our <http://weonline.biz>

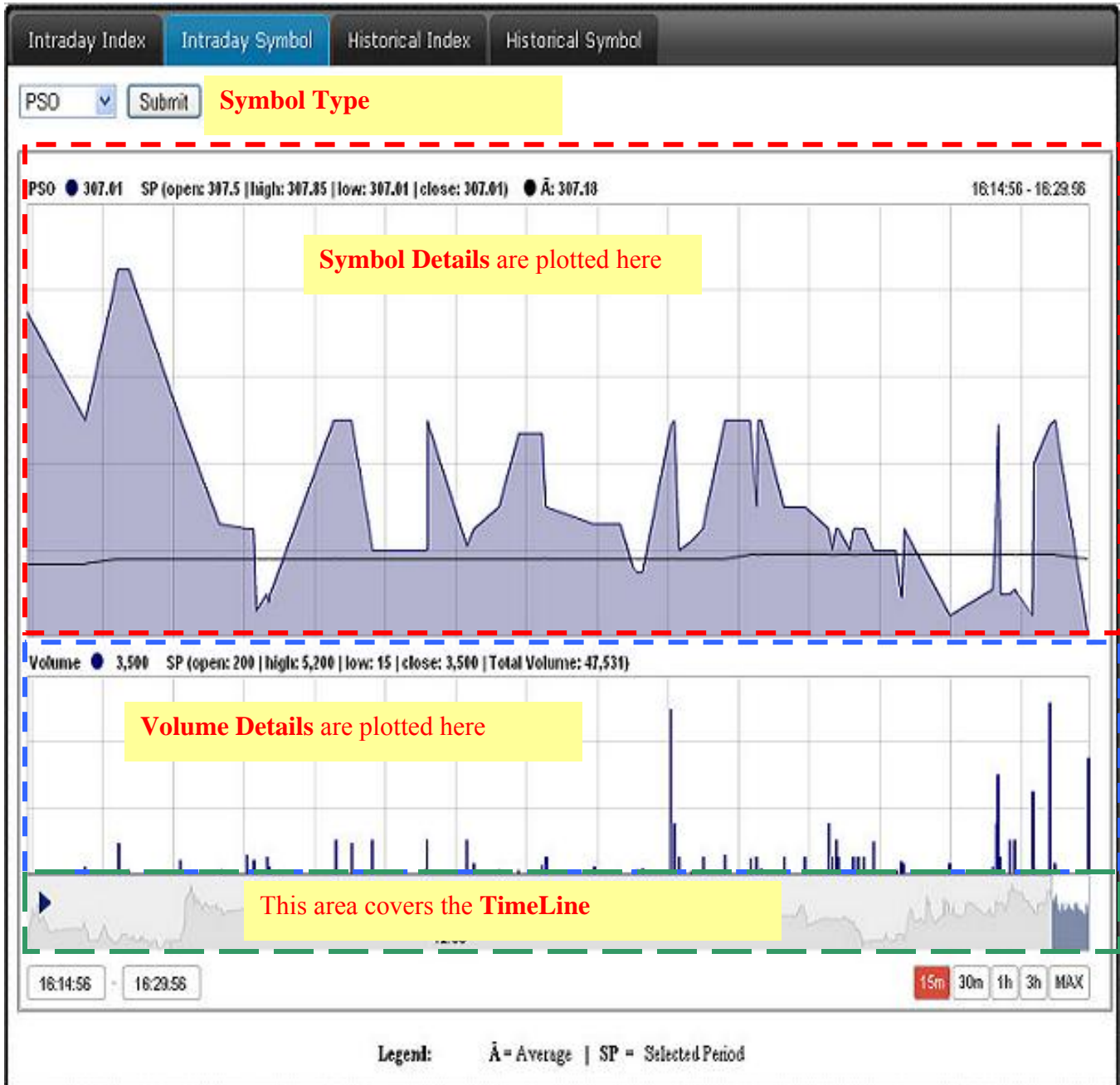
Intraday Symbol Graphs

Please note that all our illustrations in this article will be of PSO (Pakistan State Oil) as all the interactivity are the same for all the different Intraday Index Graphs.

The Graphs Layout:

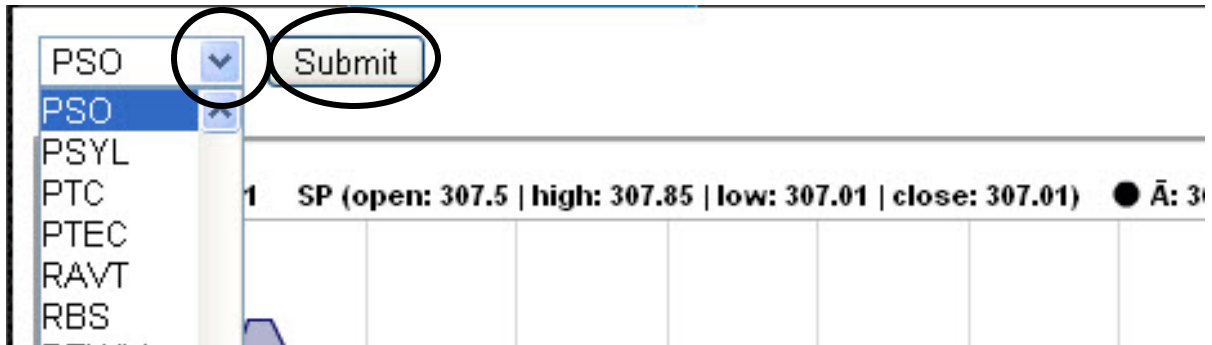
Our Intraday Symbol Graphs consist of the following **four** sections:

- **Symbol Type:** Where you choose the Index that you would like to see
- **Symbol details:** The Index details provides information about the index along with any change in Index
- The corresponding **Volume** and
- The corresponding **TimeLine**.



Our Intraday Symbol Graph is available for all the **Active companies on particular day** available through Karachi Stock Exchange, the details of which are as under:

To choose the Symbol that you want to plot, click on the down arrow a list of the Symbols will populate. Select your choice from the drop down menu and click on **Submit** (see image below).

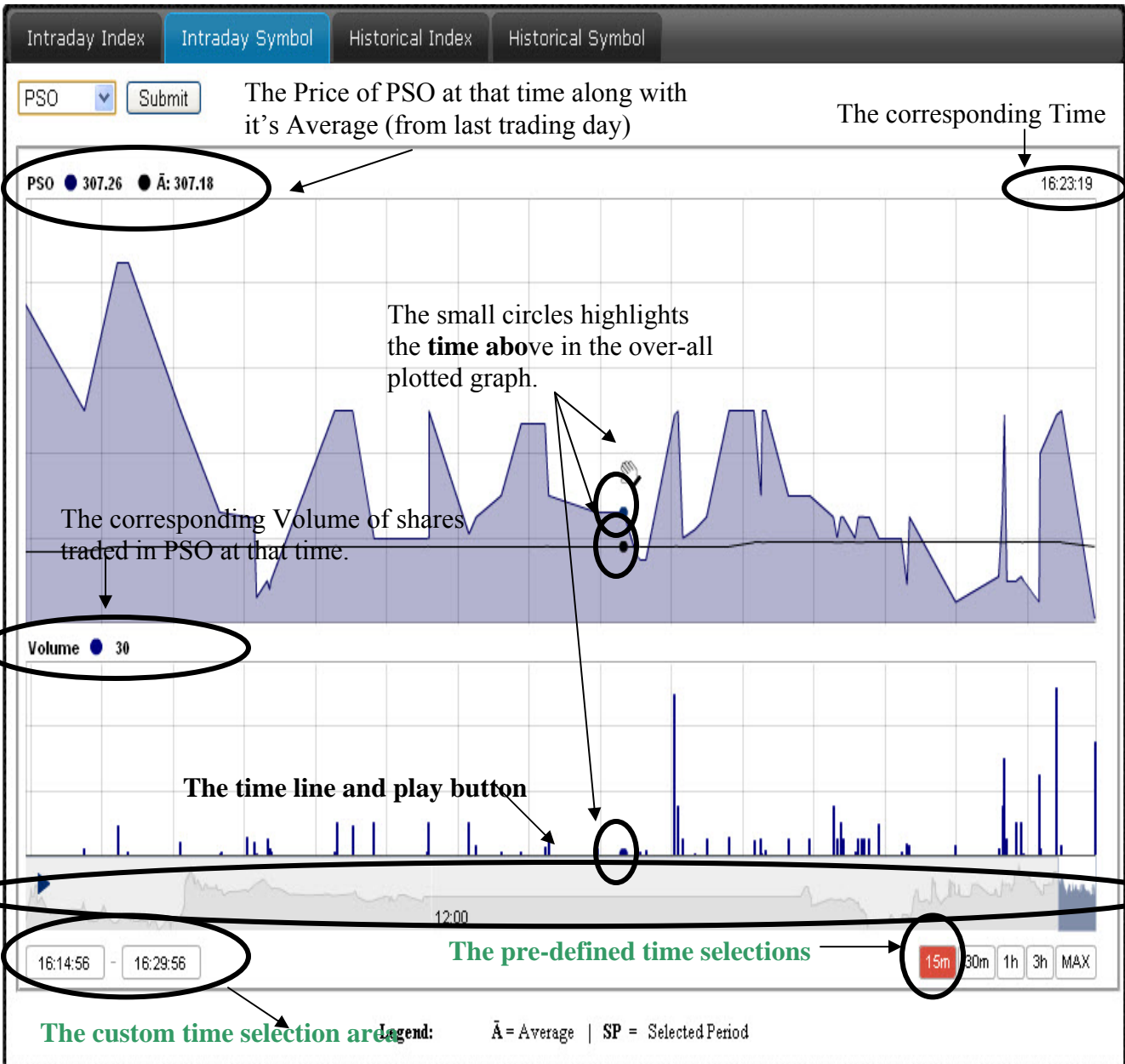


The Corresponding Graph/Chart

Once you have chosen the Desired Symbol, the chart will begin to plot the intraday activity up till that time and will keep on updating itself at pre-defined interval.

Unlike any other graph, you can visualize the plotted information in our graphs. All you have to do is to ***move the cursor anywhere on the graph*** and the corresponding time and volume is displayed. For your ease, wherever you point within the graphical area, a small circle will appear on the graph making it a truly inter-active experience.

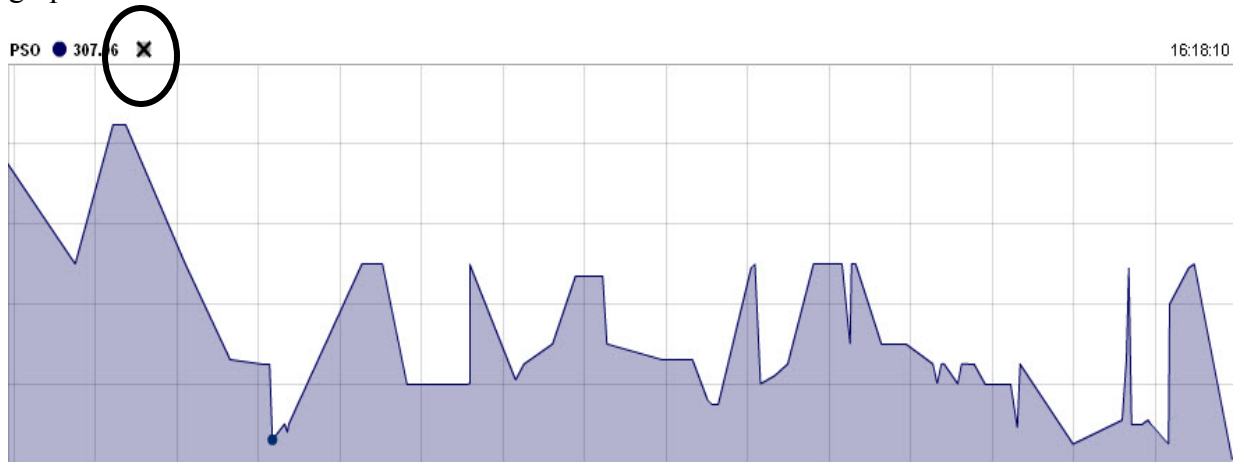
In our example below, the mouse pointer was moved where the hand is displayed:



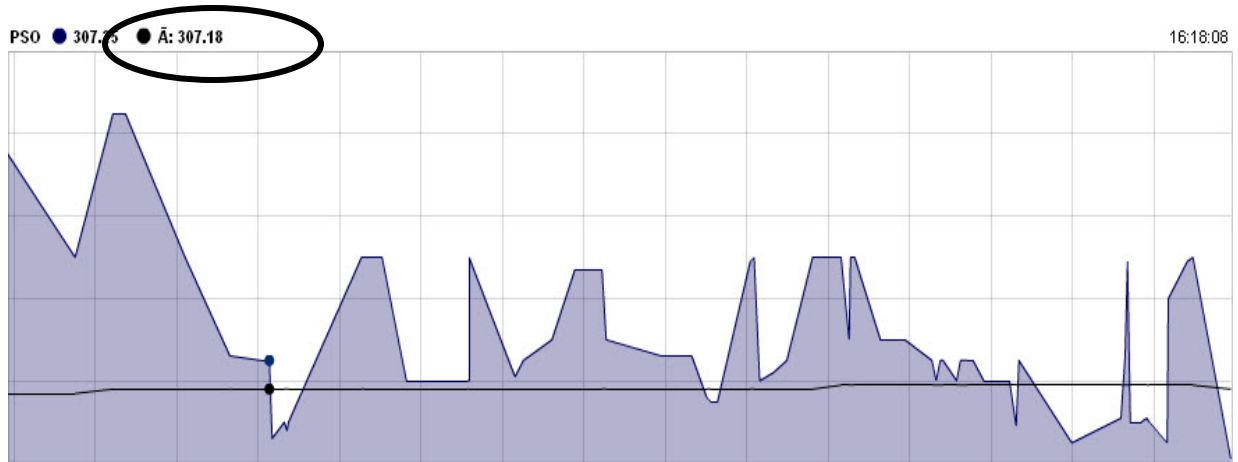
Filtration:

Our interactive intraday graphs also provides you with the choice of filtering out the information that you do not want to be plotted. All it takes is a simple click on the circle before any value (on the left side). Similarly, you can revert you filters by clicking them again.

Let's use an example and filter out the **Average** from the ***Price and Average*** part of the graph as below:



You can plot the value again by clicking the circle with an X (as shown above) and the value will be plotted again.



Pre-defined Time Frame:

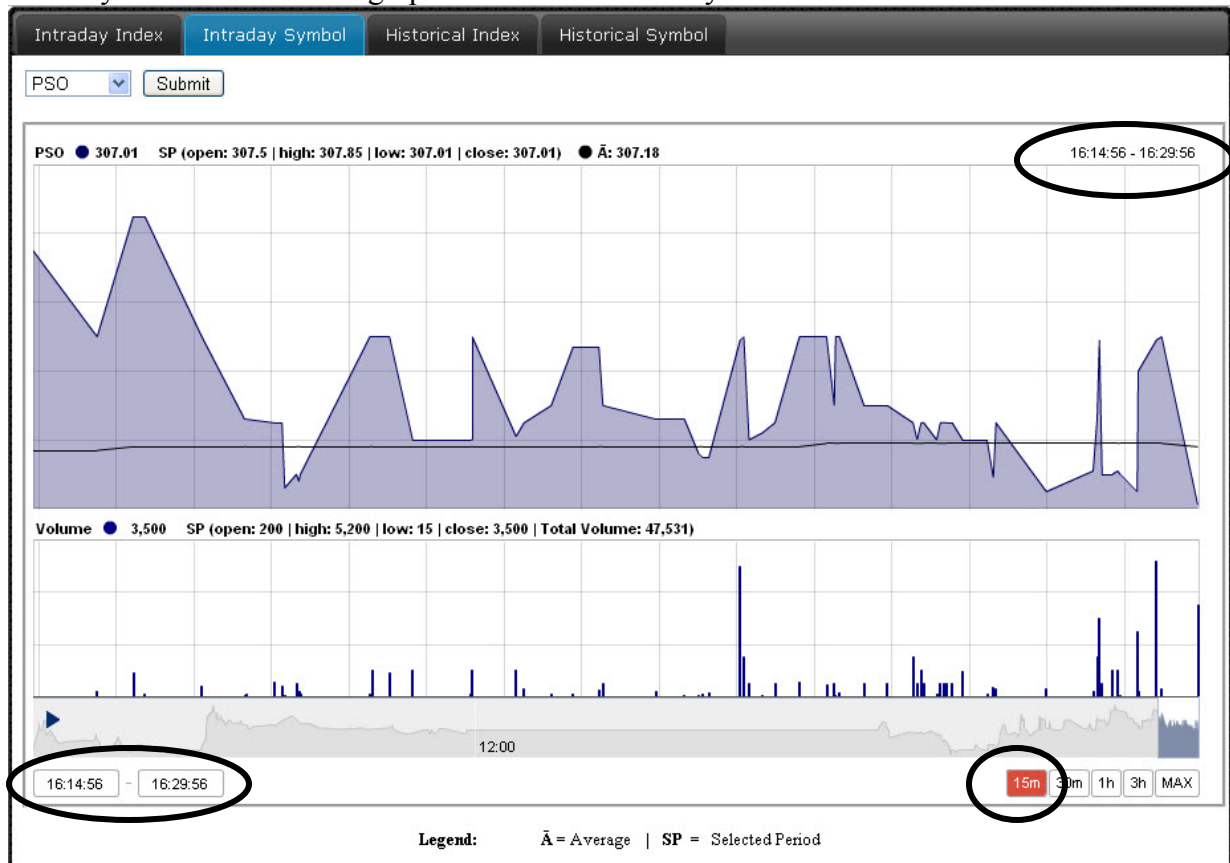
Our Interactive Intraday Graphs comes with 5 pre-defined Time Frames:

- **15 minutes**
- **30 minutes**
- **1 hour**
- **3 hour**
- **Maximum**



The graph once loaded has a default value set to 15 minutes time frame. This means that the graph will plot the last **15 minutes** every time **you load** the page. Once the graph has plotted it's values after the first time it is loaded, it auto refreshes after every 5 minutes but will only show the 15 minutes that was loaded initially OR if the time-frame that you had chosen after loading the page.

Below you can see how the graph will look like when you load the first time:



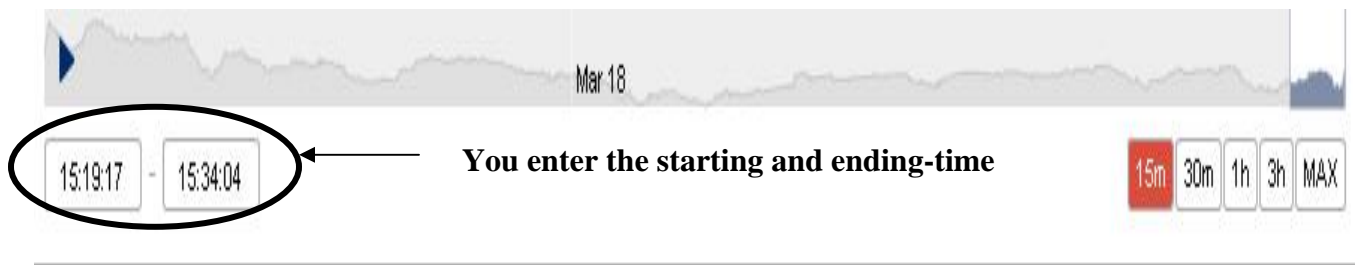
Similarly, you can choose any of the pre-defined time lines resulting in plotting of the graph for the respective time-line.

Custom Time Frame:

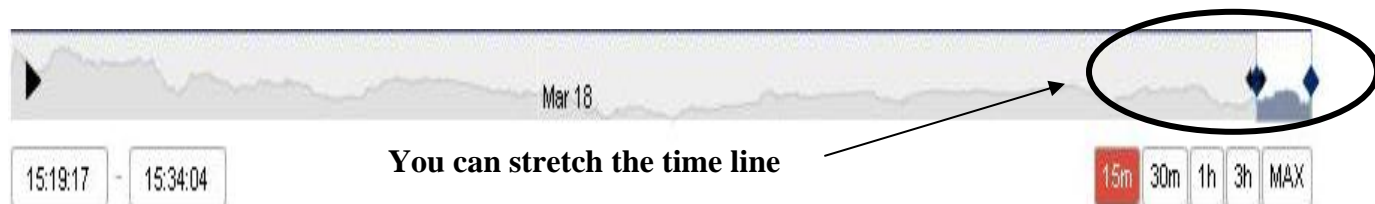
There are always times when prior information at any particular time frame is Our Interactive Charts are flexible enough to allow the user to select their own time-frame. This custom time frame can be used to magnify the graph as and when the need be.

The custom time frame can be used by entering the FROM till TO time frame and requires the following inputs:

- **Hour:** Any value between **09-16** can be entered here
- **Minutes:** Any value between **00-59** can be entered here
- **Seconds:** Any value between **00-59** can be entered here



The time frame can also be customized by extending the time line. When you bring the mouse pointer on the time line, this mark will appear on the boundary. Press the left mouse key and drag it to however longer duration you want it to be.

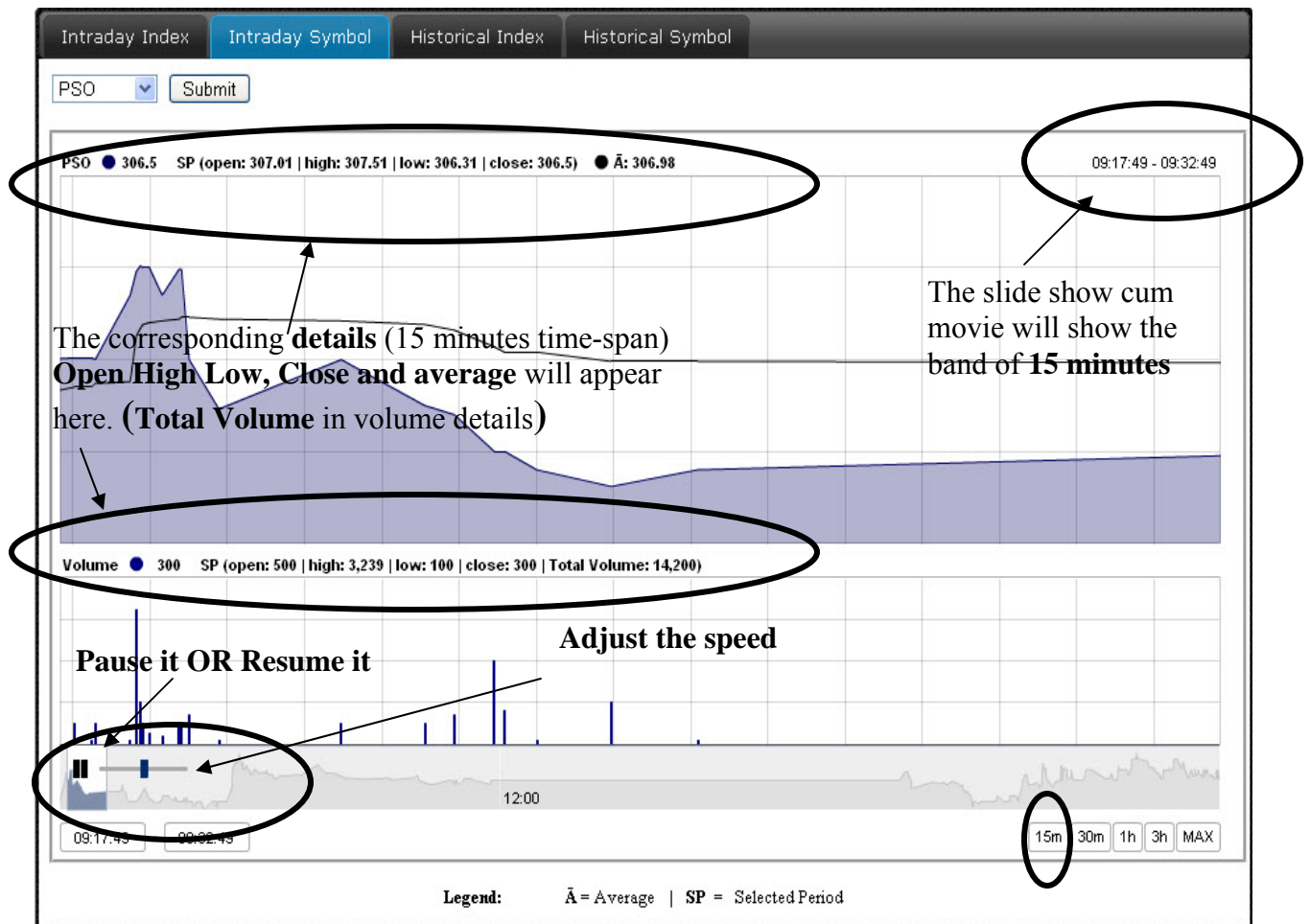


Last but not the least, you can also drag any area of the graph plotted and see it.

Slide Show cum Movie

This is the most unique feature of our interactive Graphs as you can actually see the Index graph moving at your defined time frame at your pace. And if that was not enough, you can even pause it and re-adjust the time frame and/or the pace and start viewing it again.

To begin with the slide show cum video, you need to first choose the time frame (in our example we will use (15 minutes) and press the play (▶) button and then adjust the pace by sliding the bar right for maximum speed and to the left for minimum speed:



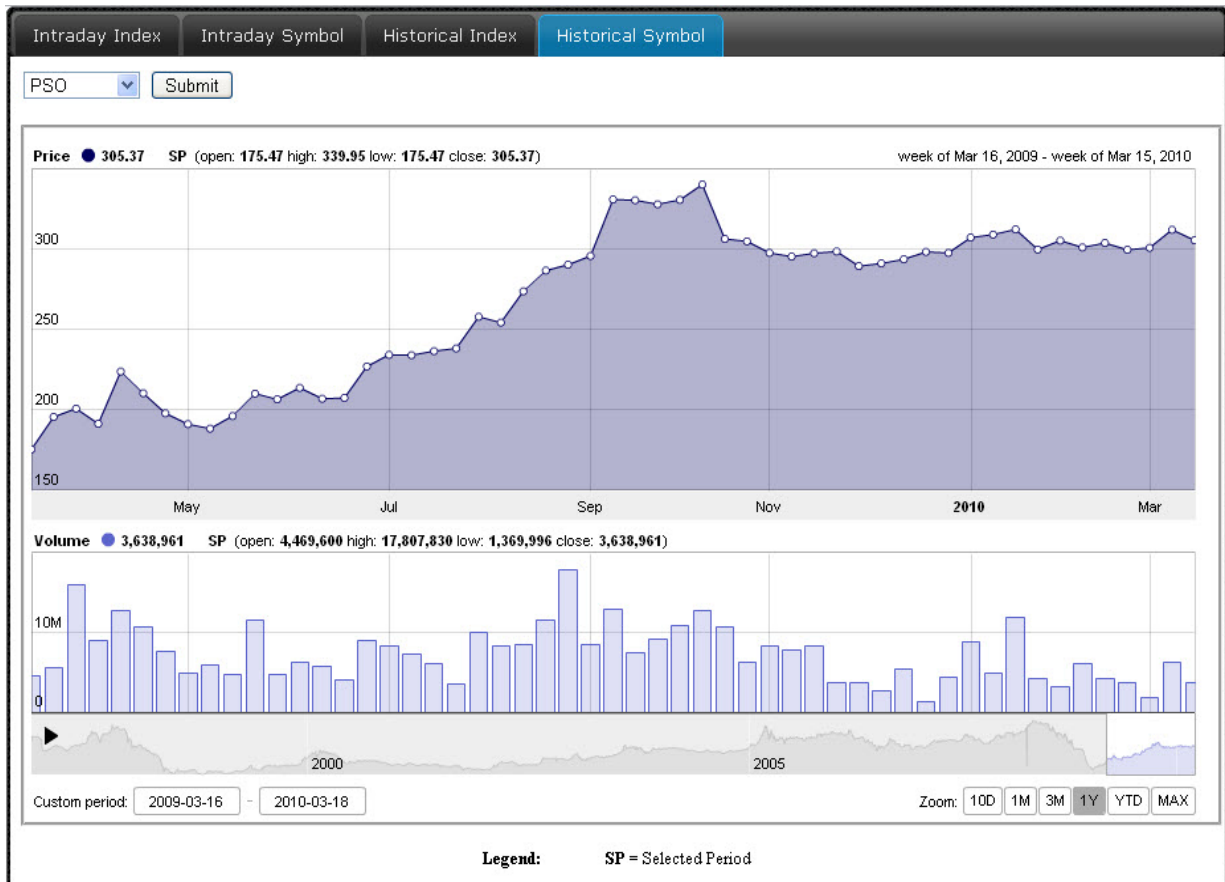
During this slide show cum video, press the Pause button and it will pause at that moment. You can customize the time frame or simply press the play button again.

Go ahead and see for yourself at our graph.

Registered clients of WE Financial Services will have the Average Volume and Total Trades plotted in the graph on a real-time basis, so investors will be able to see at what “average” rate the index or scrip is trading at. This service will be available to all the account holders with WE Financial Services Ltd. To open an account, “sign up” on our website, <http://www.weonline.biz>, or call us at (+92 21) 111-451-451 during our Business Hours.

Historical Graphs:

Our Historical Graphs have the same features as our Intraday Graphs.



WE hope this tutorial helped guide you through our innovative graphs to ensure a complete and comprehensive understanding of daily and historical trends of our local capital market.