



Graphical Representation of the Pakistani Stock Market

Understanding the Index Graphs An Overview



Part of our online Education series; WEducate,
<http://www.weonline.biz>

Table of Contents:

Types of Index Graphs

Intraday graphs

The Graphs Layout

 The Different Indexes for the Karachi Stock Exchange

Interactivity

 Illustration 1: Where the mouse is not pointing at the graph

 Illustration 2: Where the mouse is pointing at the graph

 Illustration 3: Pre-defined Time Lines

 Illustration 4: Slide Show cum video

 Illustration 5: Information

Historical Graphs

Introduction:

“A picture tells a thousand words”. Our Interactive Graphs have proved this phrase by providing the user a unique and over-whelming experience.

Ever wondered, how the market trailed since the opening bells as a regular market screen provides the market information at that point in time with some sense of what has happened from the beginning till that time. A Graph on the other hand paints a much broader picture.

But it does not end here as there are various types of graphs with varying capabilities. A better understanding can only be achieved if the graph can paint the picture the way you want to see it, so you don't miss out on the finer points.

Our highly Interactive Graphs provides you with just that as they not only plot the Index(es) but also empower the user by offering un-matched tools. From pre-defined time frames to simply watching the graph play as a movie, our Interactive graphs will truly provide an enlightened experience.

Types of Index Graphs

WE offer three different types of Index Graphs which are highly interactive, namely;

- Intraday Graphs
- Historical Graphs and
- Technical Analysis (Both Historical as well as Intraday)

WE will be covering the Intraday and Historical Index Graphs in this article, whereas for Technical Analysis, please see our <http://weonline.biz>

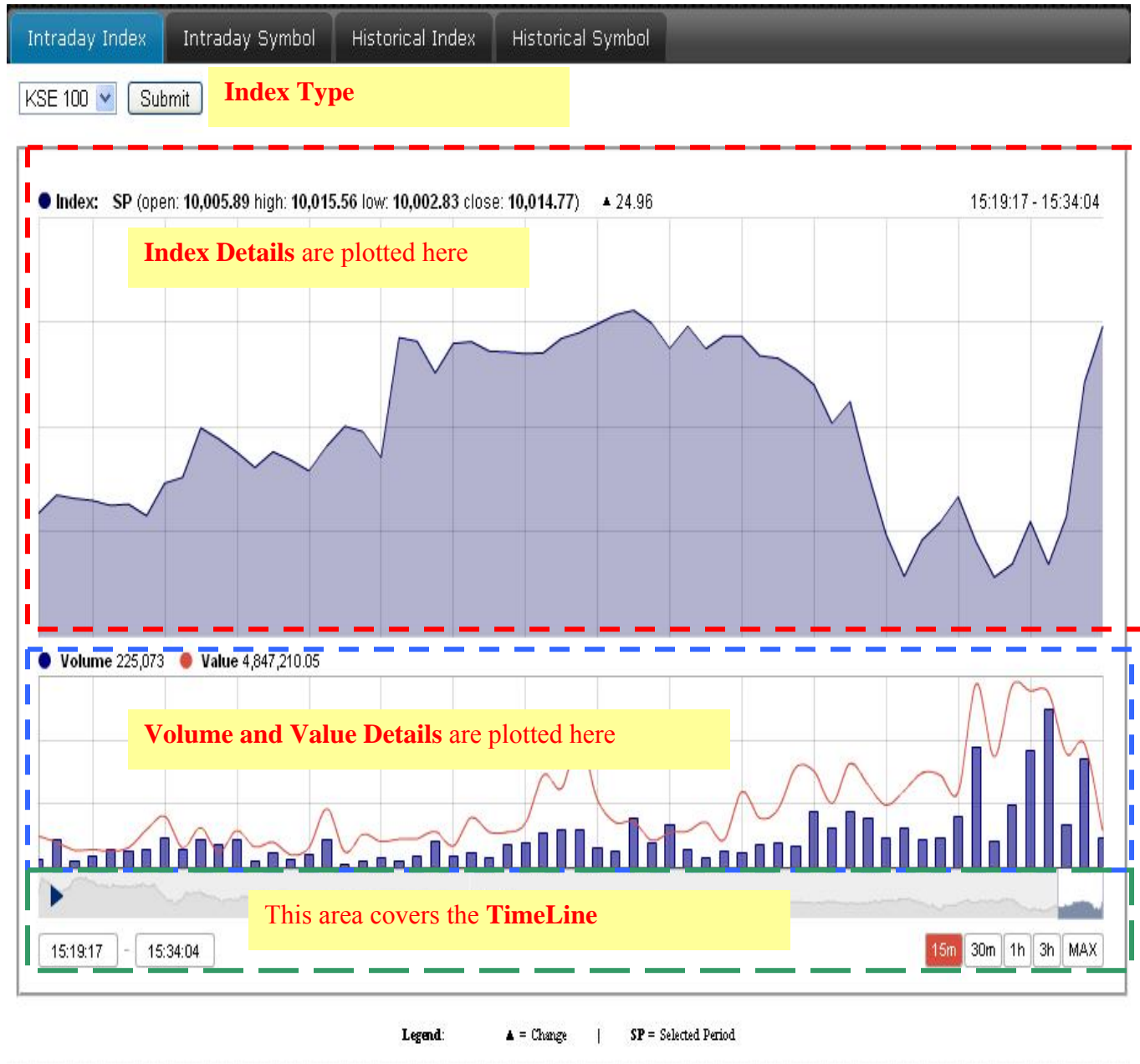
Intraday Index Graphs

Please note that all our illustrations in this article will be of KSE-100 as all the interactivity are the same for all the different Intraday Index Graphs.

The Graphs Layout:

Our Intraday Index Graphs consist of the following **four** sections:

- **Index Type:** Where you choose the Index that you would like to see
- **Index details:** The Index details provides information about the index along with any change in Index
- The corresponding **Volume and Value Details** and
- The corresponding **TimeLine**.

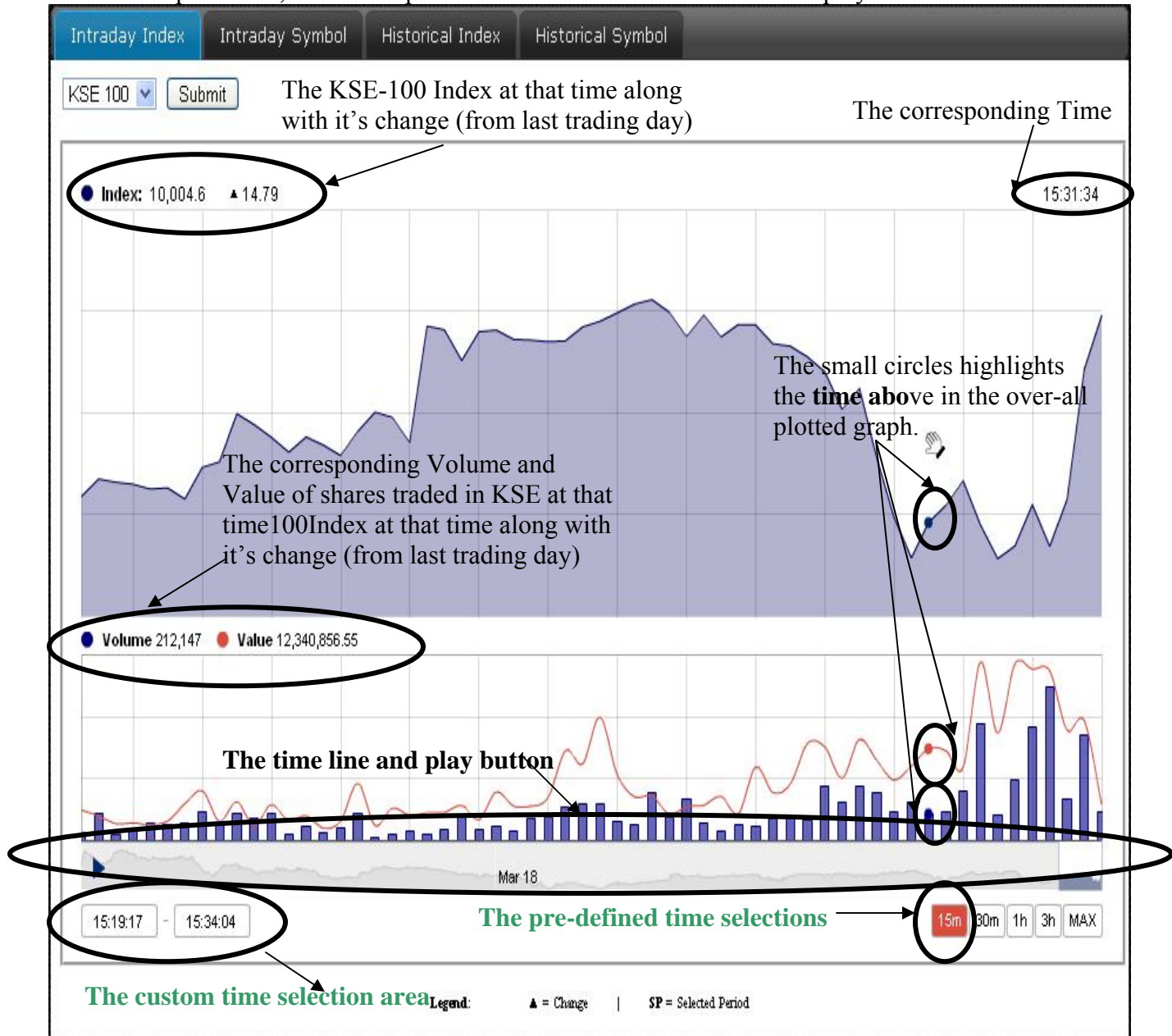


The Corresponding Graph/Chart

Once you have chosen the Desired Index, the chart will begin to plot the intraday activity till that time and will keep on updating itself at pre-defined interval.

Unlike any other graph, you can visualize the plotted information in our graphs. All you have to do is to **move the cursor anywhere on the graph** and the corresponding time, volume and value is displayed. For your ease, wherever you point within the graphical area, a small circle will appear on the graph making it a truly inter-active experience.

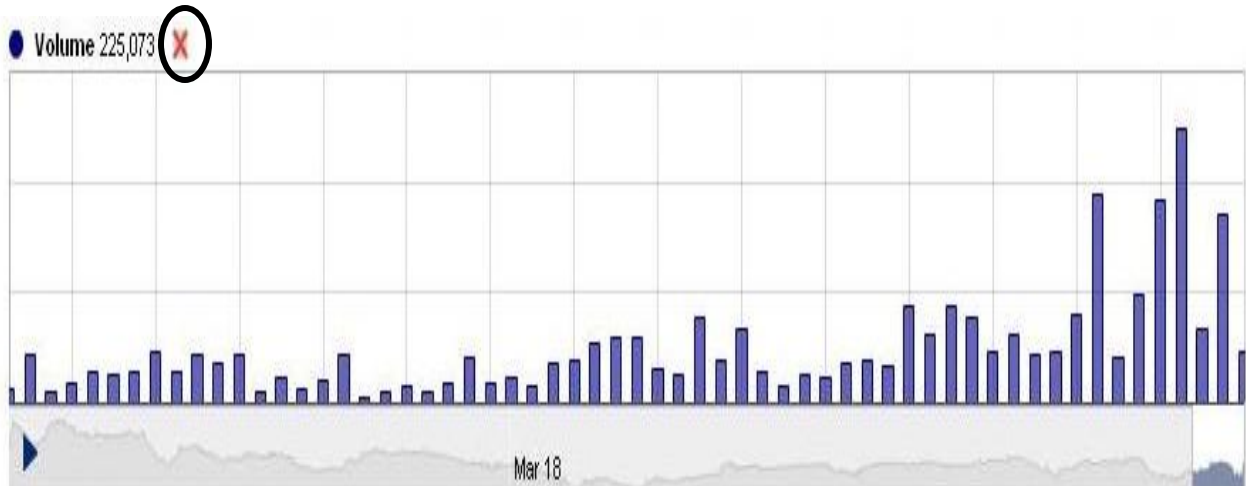
In our example below, the mouse pointer was moved where the hand is displayed:



Filtration:

Our interactive intraday graphs also provides you with the choice of filtering out the information that you do not want to be plotted. All it takes is a simple click on the circle before any value (on the left side). Similarly, you can revert you filters by clicking them again.

Let's use an example and filter out the **Value** from the **Volume and Value** part of the graph as below:



You can plot the value again by clicking the circle with an X (as shown above) and the value will be plotted again.



Pre-defined Time Frame:

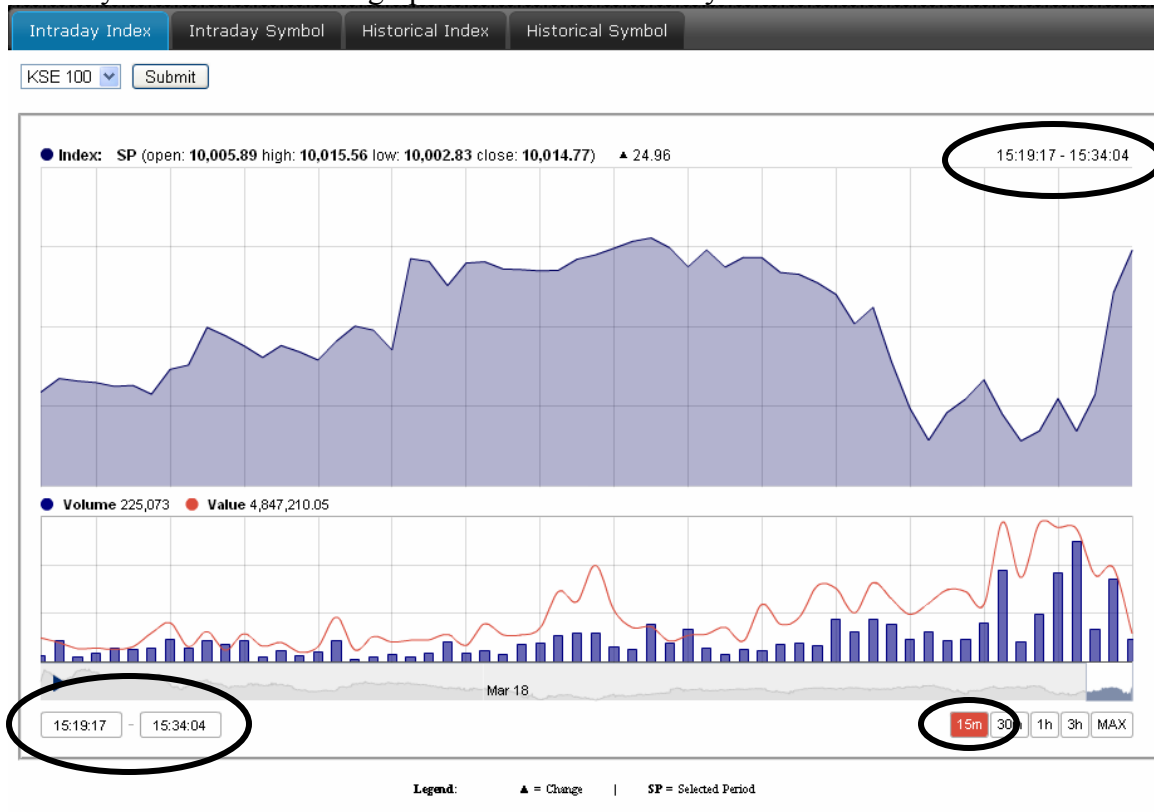
Our Interactive Intraday Graphs comes with 5 pre-defined Time Frames:

- **15 minutes**
- **30 minutes**
- **1 hour**
- **3 hour**
- **Maximum**



The graph once loaded has a default value set to 15 minutes time frame. This means that the graph will plot the last **15 minutes** every time **you load** the page. Once the graph has plotted it's values after the first time it is loaded, it auto refreshes after every 5 minutes but will only show the 15 minutes that was loaded initially OR if the time-frame that you had chosen after loading the page.

Below you can see how the graph will look like when you load the first time:



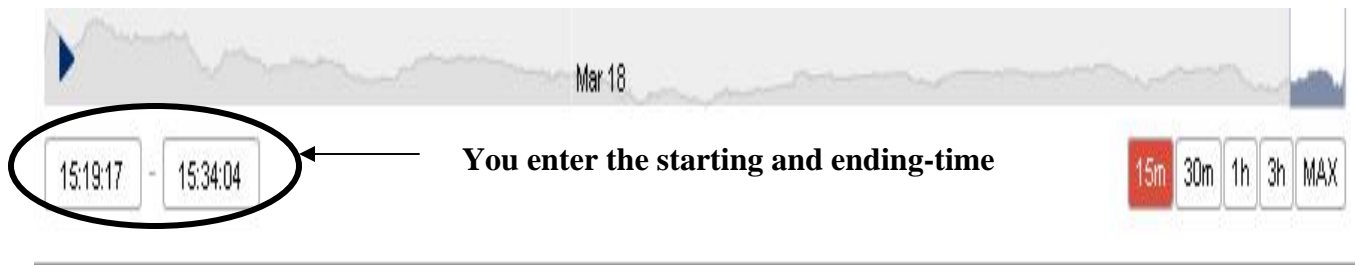
Similarly, you can choose any of the pre-defined time lines resulting in plotting of the graph for the respective time-line.

Custom Time Frame:

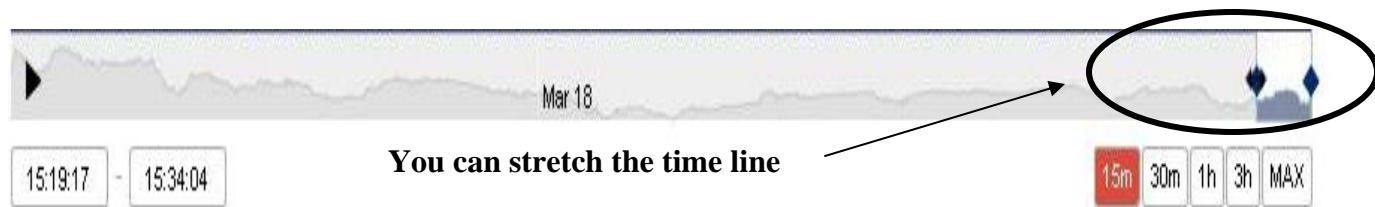
There are always times when prior information at any particular time frame is Our Interactive Charts are flexible enough to allow the user to select their own time-frame. This custom time frame can be used to magnify the graph as and when the need be.

The custom time frame can be used by entering the FROM till TO time frame and requires the following inputs:

- **Hour:** Any value between **09-16** can be entered here
- **Minutes:** Any value between **00-59** can be entered here
- **Seconds:** Any value between **00-59** can be entered here



The time frame can also be customized by extending the time line. When you bring the mouse pointer on the time line, this mark will appear on the boundary. Press the left mouse key and drag it to however longer duration you want it to be.

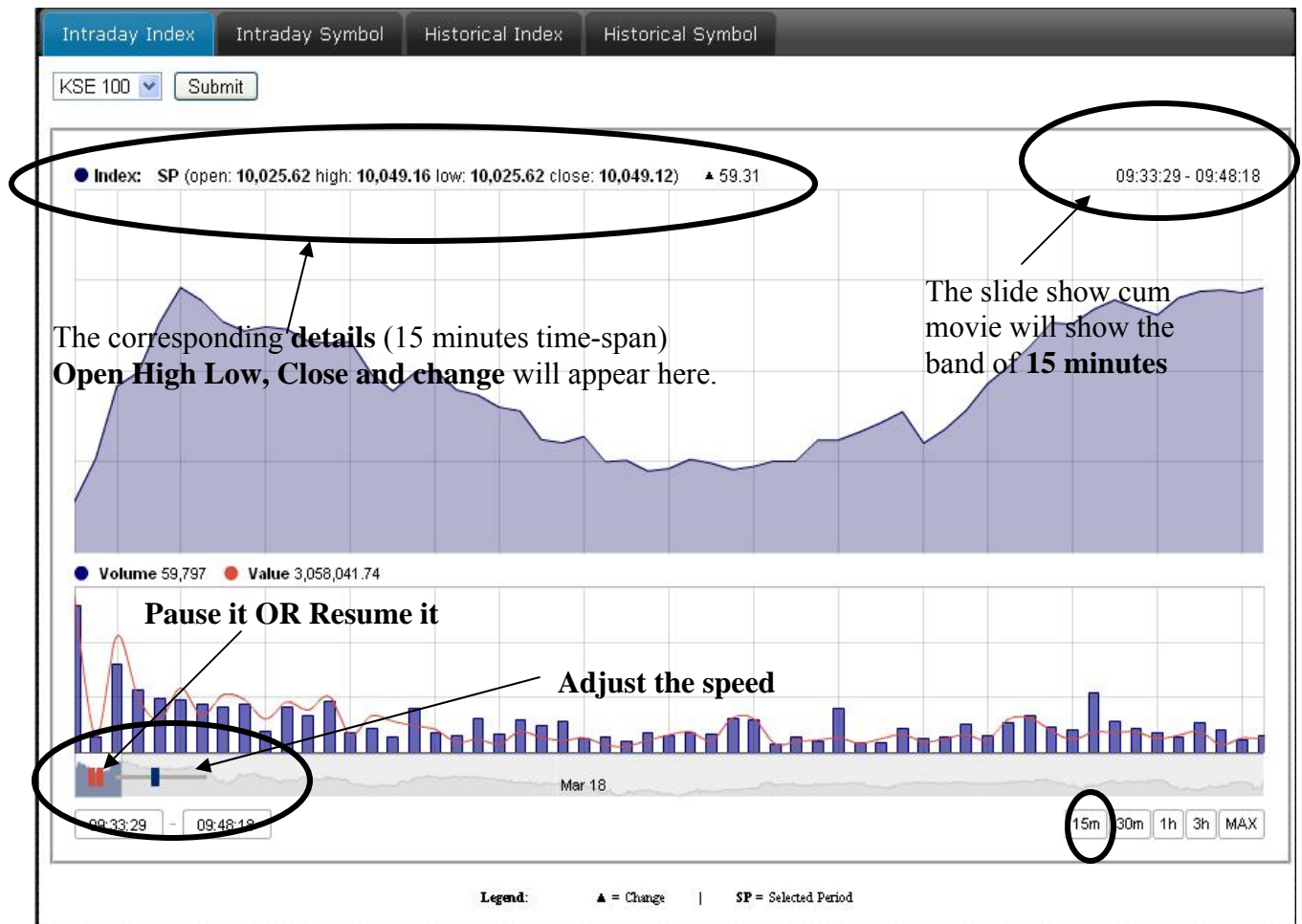


Last but not the least, you can also drag any area of the graph plotted and see it.

Slide Show cum Movie

This is the most unique feature of our interactive Graphs as you can actually see the Index graph moving at your defined time frame at your pace. And if that was not enough, you can even pause it and re-adjust the time frame and/or the pace and start viewing it again.

To begin with the slide show cum video, you need to first choose the time frame (in our example we will use (15 minutes) and press the play (▶) button and then adjust the pace by sliding the bar right for maximum speed and to the left for minimum speed:



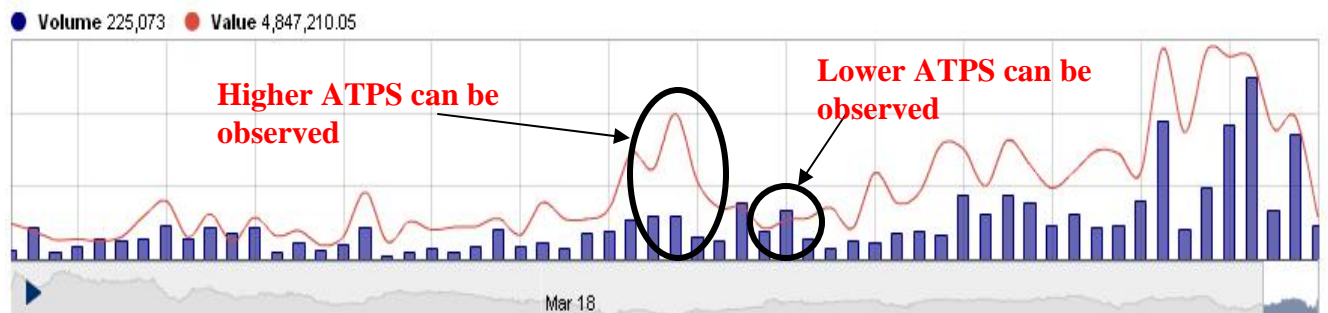
During this slide show cum video, press the Pause button and it will pause at that moment. You can customize the time frame or simply press the play button again.

Information

Well, we have so far discussed on the interactivity of our Intraday graphs now let's see how our graphs can empower you by giving you extremely valuable information. If you look closely at the Volume and Value part of the graph, you can identify the **Average Traded Price per Share (ATPS)**.

What is an Average Traded Price Per Share? Well, an ATPS gives you an idea as to the average share value that is being traded in KSE at any given point in time.

In the examples below, ATPS can be viewed closely:

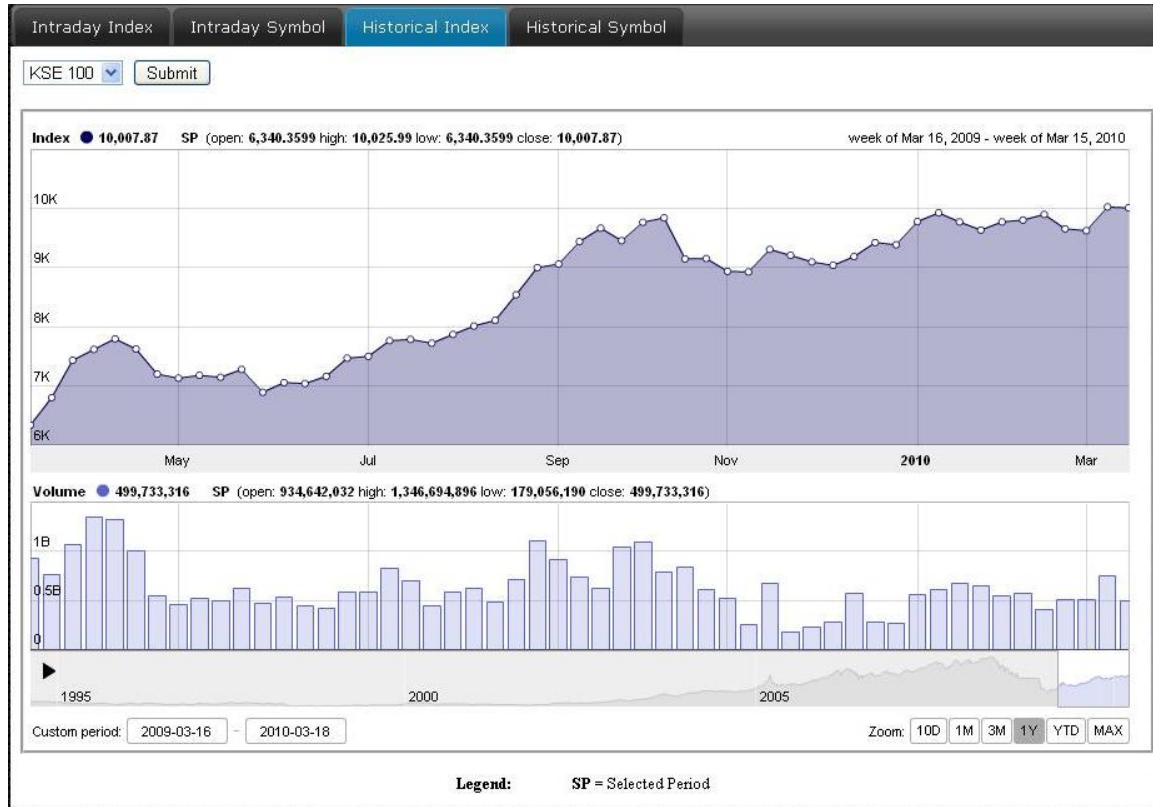


Go ahead and see for yourself at our graph.

Registered clients of WE Financial Services will have the Average Trade Price per Share (ATPS) plotted in the graph on a real-time basis along with the value, so investors will be able to see at what “average” rate the index or scrip is trading at. This service will be available to all the account holders with WE Financial Services Ltd. To open an account, “sign up” on our website, <http://www.weonline.biz>, or call us at (+92 21) 111-451-451 during our Business Hours.

Historical Graphs:

Our Historical Graphs have the same features as our Intraday Graphs. The only difference is that the Value is not available.



WE hope this tutorial helped guide you through our innovative graphs to ensure a complete and comprehensive understanding of daily and historical trends of our local capital market.